

MONTHLY MEMBERSHIP PROGRESS REPORT

LOCATION TURKEY

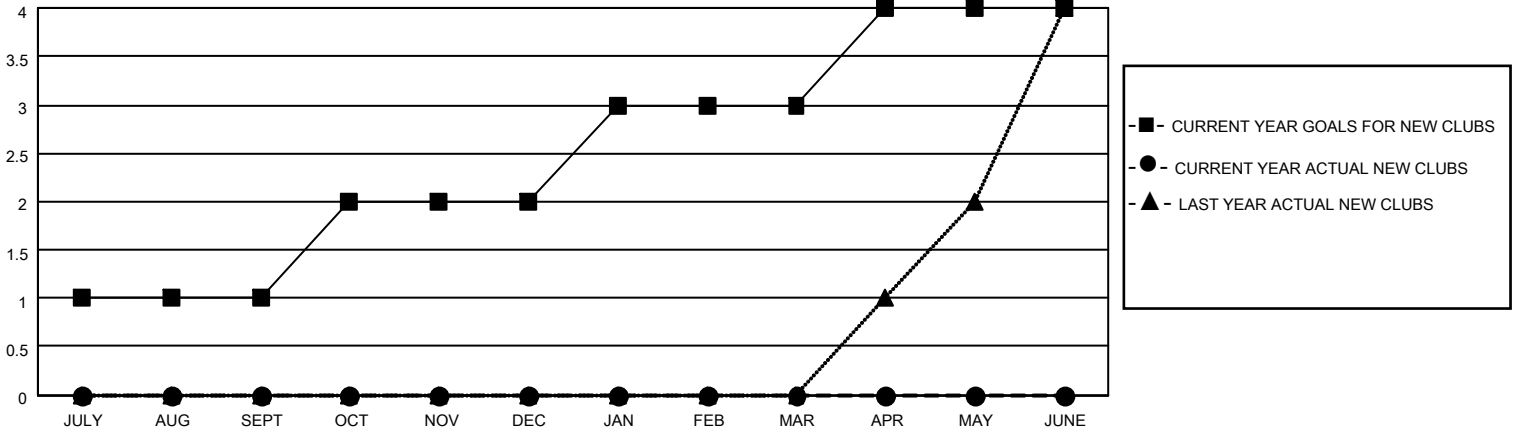
District 118 U

Results as of: 6/30/2023

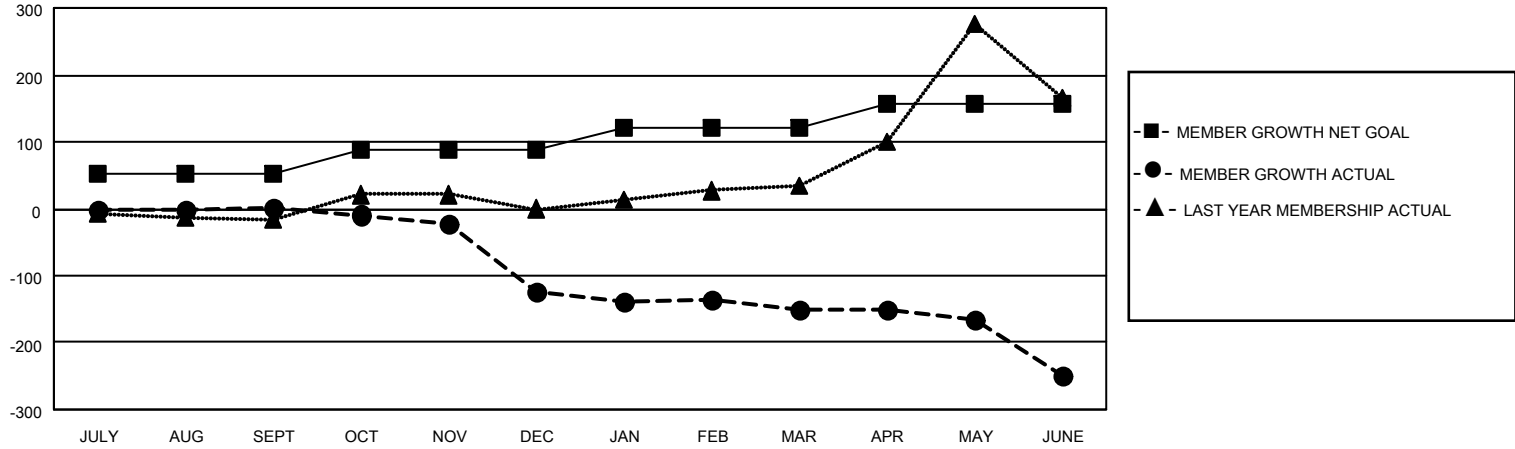
Clubs			
RESULTS FOR 2022-2023			
QUARTER	NEW CLUB GOAL	NEW CLUBS	DROPPED CLUBS
JULY/AUG/SEPT	1	0	1
OCT/NOV/DEC	1	0	1
JAN/FEB/MAR	1	0	0
APR/MAY/JUNE	1	0	1

Members			
RESULTS FOR 2022-2023			
QUARTER	MEMBER GROWTH NET GOAL	MEMBER GROWTH ACTUAL	DROPPED MEMBERS ACTUAL (including transfers)
JULY/AUG/SEPT	52	22	21
OCT/NOV/DEC	37	15	140
JAN/FEB/MAR	32	31	44
APR/MAY/JUNE	37	45	134

GOALS AND ACTUAL NEW CLUBS CUMULATIVE



GOALS AND ACTUAL MEMBERS CUMULATIVE



DROPPED CLUBS: 3	
DROPPED MEMBERS	
DECEASED	5
CLUB CANCELLED	13
OTHER	321
TOTAL	339

26 CLUBS OF 56 ADDED 1 OR MORE NEW MEMBERS

[CLICK HERE FOR CUMULATIVE MEMBERSHIP DATA](#)

<u>GENDER DISTRIBUTION</u>	
MALE	354 (36.99%)
FEMALE	602 (62.90%)
NON BINARY	0 (0.00%)
PREFER NOT TO ANSWER	1 (0.10%)
<hr/>	
TOTAL FAMILY UNIT MEMBERS	82
<hr/>	
FAMILY MEMBERS PAYING HALF DUES	43